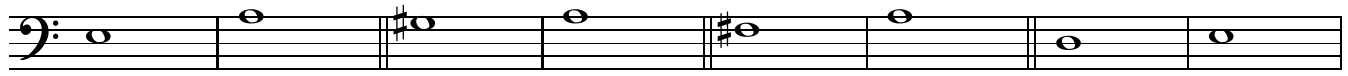


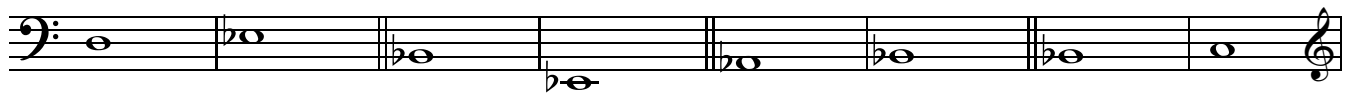
Identificar las cadencias y rellenar los acordes (todos son fundamentales)

(perfecta= P ,imperfecta= I ,rota= R ,plagal= PL ,semicadencia= S)

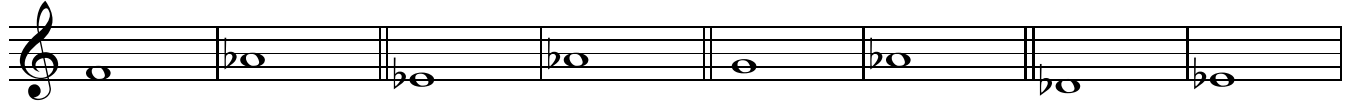
Desde La Mayor



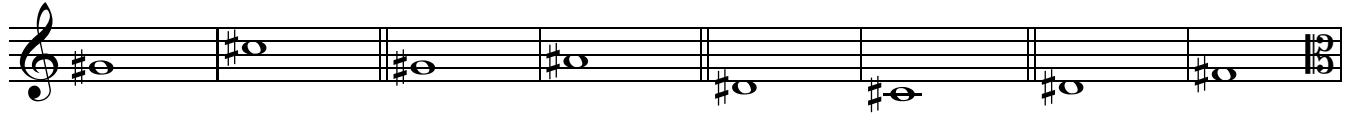
Desde Mib Mayor



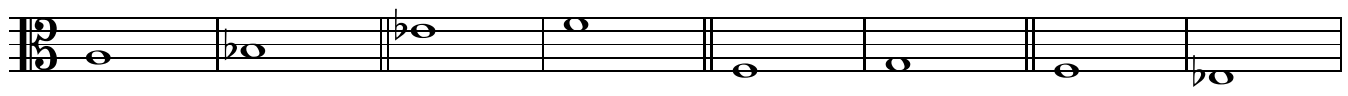
Desde Lab Mayor



Desde Do# Mayor



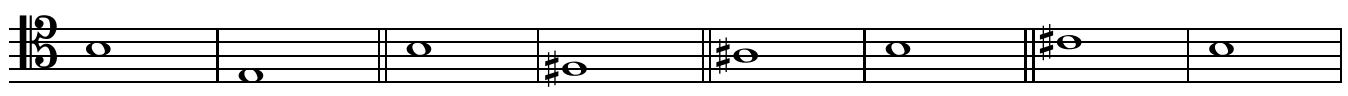
Desde Sib Mayor



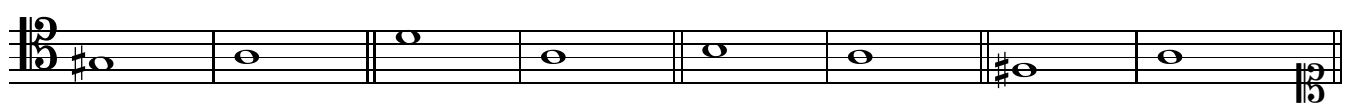
Desde Reb Mayor



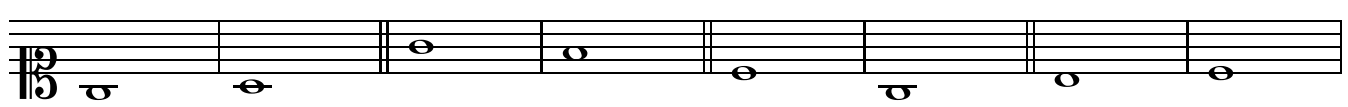
Desde Si Mayor



Desde La Mayor



Desde Do Mayor



Desde La Mayor

