

# Tipos de escalas

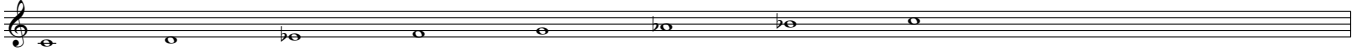
A. Villalonga

## *Escalas de práctica común*

Diatónica mayor



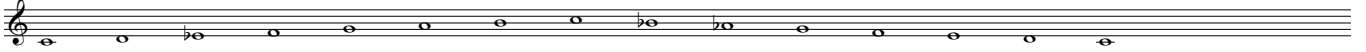
Diatónica menor natural



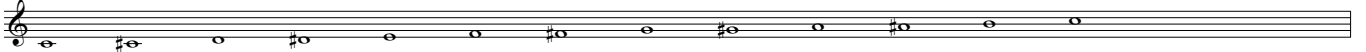
Diatónica menor armónica



Diatónica menor melódica



Cromática ascendente



Cromática descendente



## *Escalas modales*

Modo jónico



Modo dórico



Modo frigio



Modo lidio



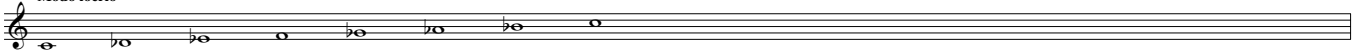
Modo mixolidio



Modo eolio

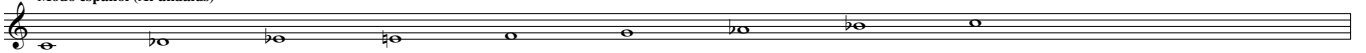


Modo locrio



## *Escalas especiales*

Modo español (Al-andalus)



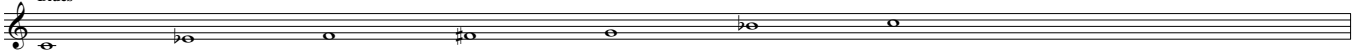
Pentatónica



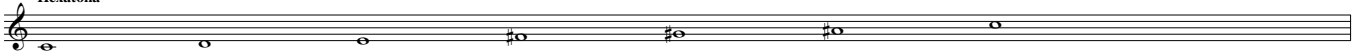
Pentatónica menor



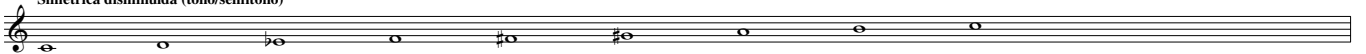
Blues



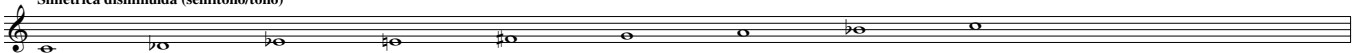
Hexátona



Simétrica disminuida (tono/semitono)



Simétrica disminuida (semitono/tono)



Acústica (Bartok)

